

STT Systems

Zuatzu Business Park, Easo Building, 2nd Floor, San Sebastián, Guipúzcoa 20018, Spain

Sample Bike Customer

unique_id

04/07/2021

Side and back

Manufacturer:

-

Model:

-

Size:

-



BIKE

ANTHROPOMETRY

Total height	1770 mm
Trunk length	500 mm
Shoulder width	700 mm
Arm length	400 mm
Forearm length	300 mm
Inseam height	850 mm
Shoe size	46
Flexibility	Medium
Weight	77 kg

STUDY: Side and back

Study reason

User goals

History

Injury history

Physical assessment

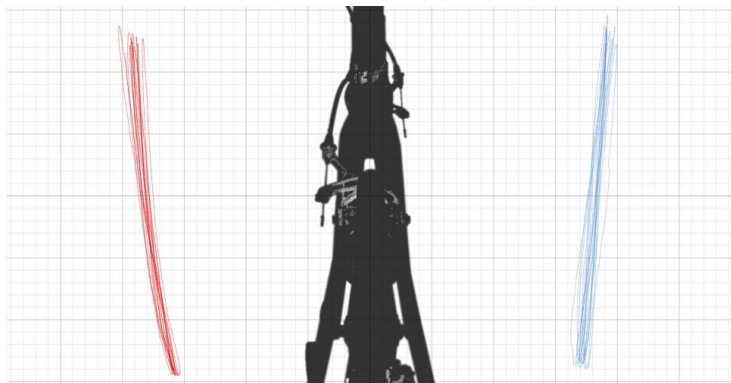
Notes

DYNAMIC ANALYSIS

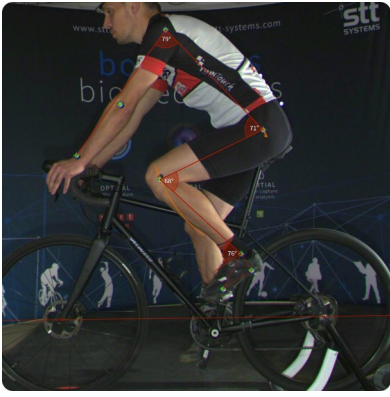
LOWER BODY	USER	RANGE
Knee flexion	68°	+67/+73
Knee extension	130°	+138/+148
Ankle ROM	27°	> +20
KOPS	61 mm	-10/+10
Ankle @ 0°	77°	
Ankle @ 90°	86°	
Ankle @ 180°	98°	+90/+100
Ankle @ 270°	86°	

UPPER BODY	USER	RANGE
Trunk tilt	47°	+40/+50
Lumbar obliquity	2°	
Lumbar lateral oscillation	-14 mm	
Pelvic obliquity	-1°	
Max. hip flexion	66°	+55/+65
Hip height difference	11 mm	
Hip vertical ROM	33 mm	< +50
Hip horizontal ROM	18 mm	< +20
Hip-wrist absolute dist.	752 mm	
Hip-wrist horizontal dist.	747 mm	
Hip-wrist vertical dist.	79 mm	
Shoulder	79°	+80/+90
Elbow flexion	171°	
Forearm tilt	49°	

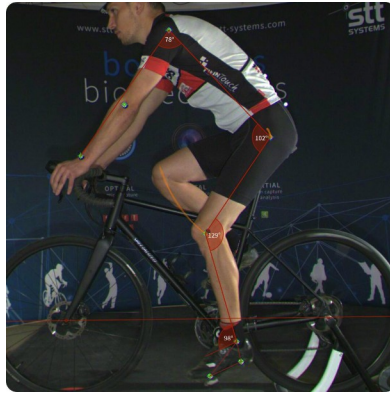
KNEES	LEFT	RIGHT	RANGE
Knee inclination	13°	2°	



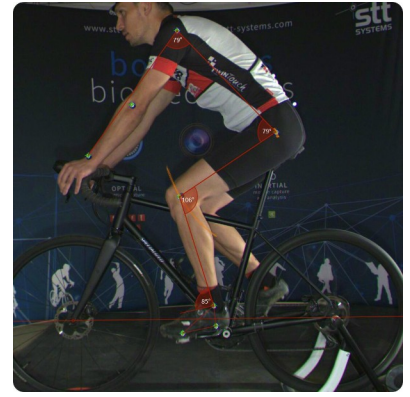
Knee lateral dist. (min)	165 mm	163 mm	
Knee lateral dist. (avg)	183 mm	174 mm	
Knee lateral dist. (max)	199 mm	185 mm	



Knee flexion



Knee extension



KOPS

Notes: